



ELECTROLUX HOME PRODUCTS PTY LTD
ABN 51 004 762 341

Technical Publication N° RH093.docx

Issue: 1
Date: 3/13

WEB SITE ADDRESS: www.partnship.com.au

WESTINGHOUSE

RANGEHOOD

MODEL:

WRG920FGS

PNC 942001179

First Built Dates:	
WRG920FGS	4/11

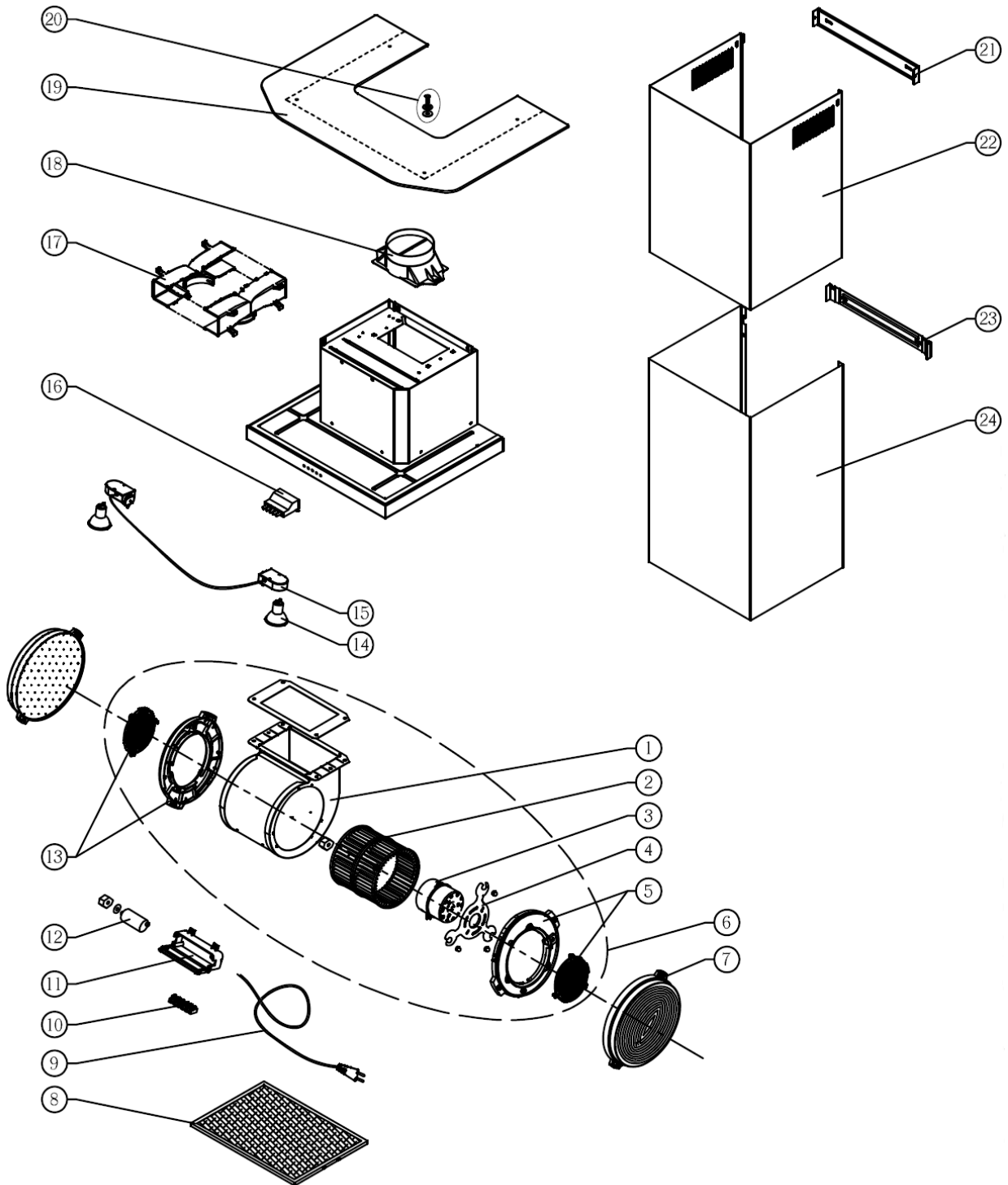
CONTENTS	PAGE N°
FIRST BUILT DATES	2
CONTENTS	3
RANGEHOOD ASSEMBLY	4 - 5
CIRCUIT DIAGRAM	6

NOTE: In Parts Listings

N.I. = Not Illustrated
N.P.A. = No Part Available
N.P.N. = Not Used on this Model

MODEL: WRG920FGS
PNC: 942001179

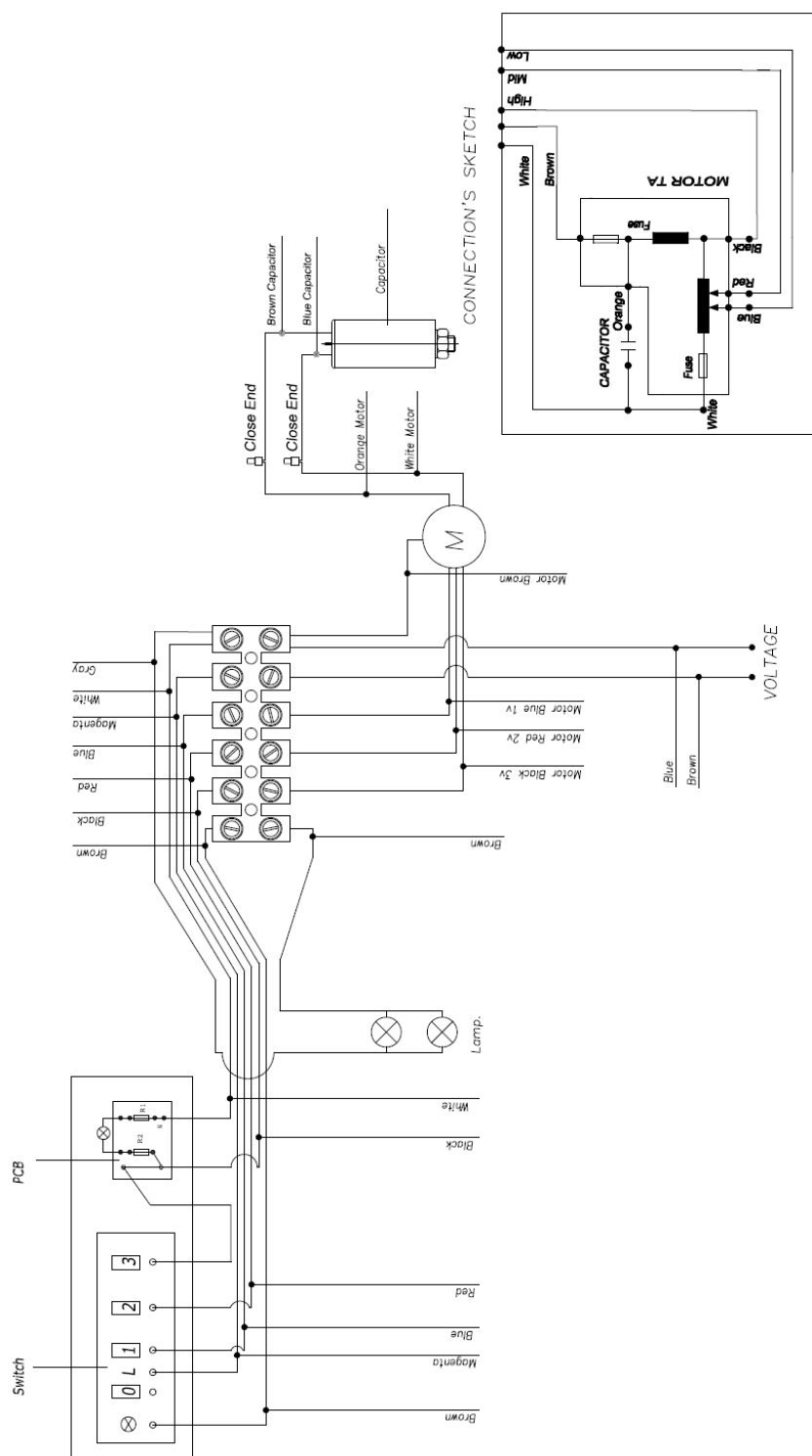
**EX. VIEW DRAWING WRG920FGS
 RANGEHOOD ASSEMBLY**



ITEM	PART N°	DESCRIPTION Ex WRG920FGS	QTY
1	N.P.A.	MOTOR CASING (PT OF ITEM 6)	1
2	E607075	FAN TURBINE BLOWER (PT OF ITEM 6)	1
3	E649020	MOTOR TA 220-240V 50Hz 330W (PT OF ITEM 6)	1
4	E629040	BRACKET TA MOTOR MOUNTING (PT OF ITEM 6)	1
5	E607165	COVER MOTOR RIGHT (PT OF ITEM 6)	1
6	E260045	MOTOR ASSEMBLY (INC ITEMS 1, 2, 3, 4, 5 & 13)	1
7	AR610CF	CHARCOAL FILTER (PART OF ITEM 17)	2
8	E653030	FILTER FRAME	1
9	E601025	CORD SERVICE	1
10	E611000	PCB	1
11	E607080	COVER CONNECTION BOX	1
12	E621010	CAPACITOR 5.5uF 450V	1
13	E607170	COVER MOTOR LEFT (PT OF ITEM 6)	1
14	E694055	LAMP HALOGEN GU10-220V 50W	2
15	E251010	LAMP HOLDER	1
16	E251090	SWITCH ASSEMBLY	1
17	AR610RK	KIT RECIRCULATING TEE - PIECE (INC ITEM 7)	1
18	E607385	OUTLET 120MM	1
19	E694030	GLASS	1
20	E254000	KIT GLASS FIXING SCREWS (4 SCREWS)	1
21	C600015	BRACKET FIXING COV FLUE-UPPER	1
22	C600014	COVER FLUE UPPER	1
23	C600013	BRACKET FIXING COV FLUE-LOWER	1
24	C600012	COVER FLUE LOWER	1

MODEL: WRG920FGS
PNC: 942001179

CIRCUIT DIAGRAM



WARNING

IT IS ILLEGAL FOR PERSONS OTHER THAN LICENSED ELECTRICAL MECHANICS OR PERSONS AUTHORISED BY LEGISLATION TO WORK ON THE FIXED WIRING OF ANY ELECTRICAL INSTALLATION. PENALTIES FOR CONVICTION ARE SEVERE.

IMPORTANT SAFETY NOTICE

This diagram has been prepared for use by electrically qualified service technicians. Electrolux cannot be held responsible for the interpretation of its service publications nor for any injury or damage that may occur in connection with their use.