



**ELECTROLUX HOME PRODUCTS PTY LTD**  
ABN 51 004 762 341

Technical Publication N° CG195.doc

Issue: 1  
Date: 5/11

**WEB SITE ADDRESS: [www.partnship.com.au](http://www.partnship.com.au)**

***WESTINGHOUSE***

***GAS COOKTOP***

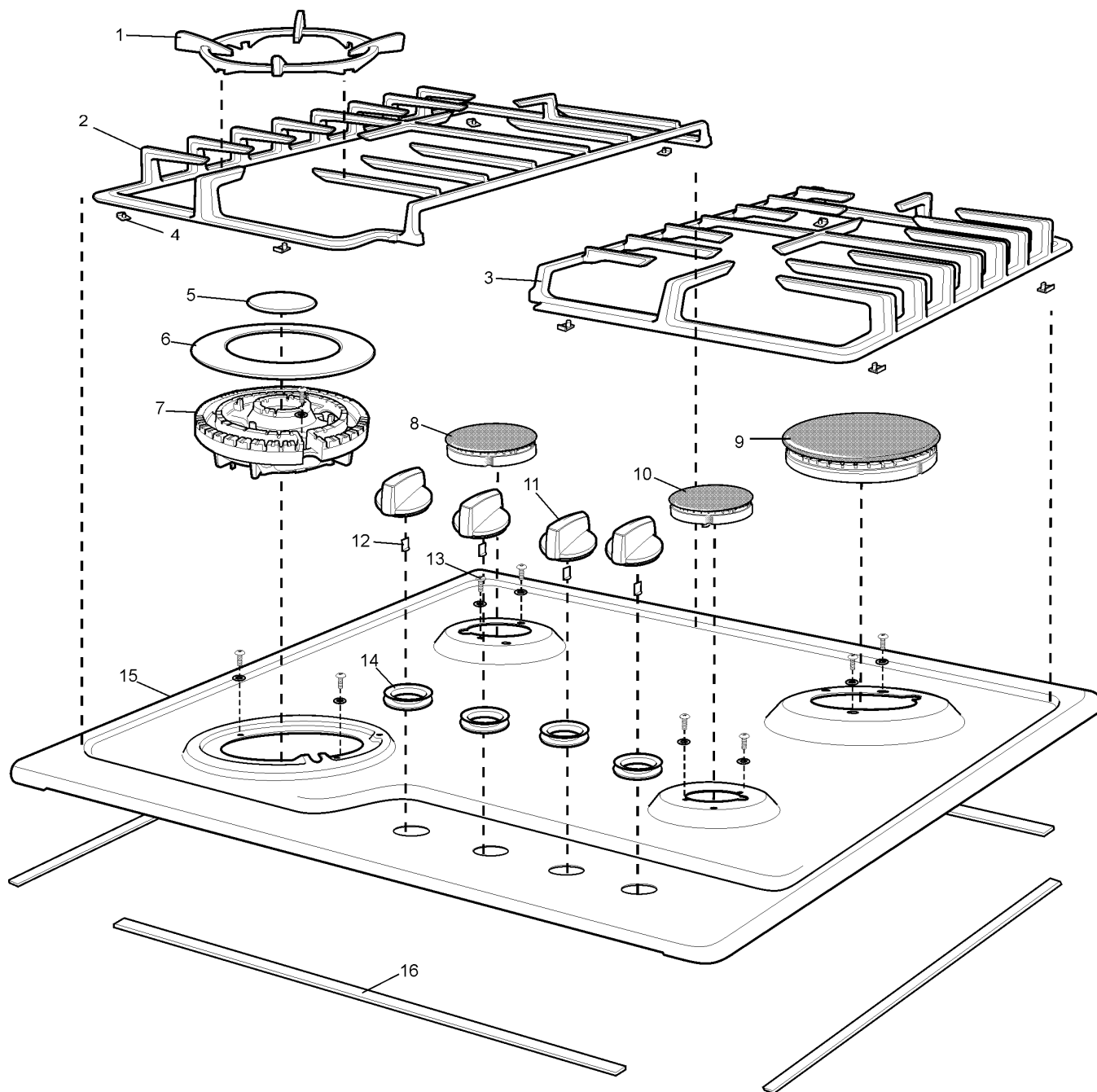
***MODEL:***  
**GHR765S**  
**PNC 943253735**

First Built Dates:	
GHR765S	5/11

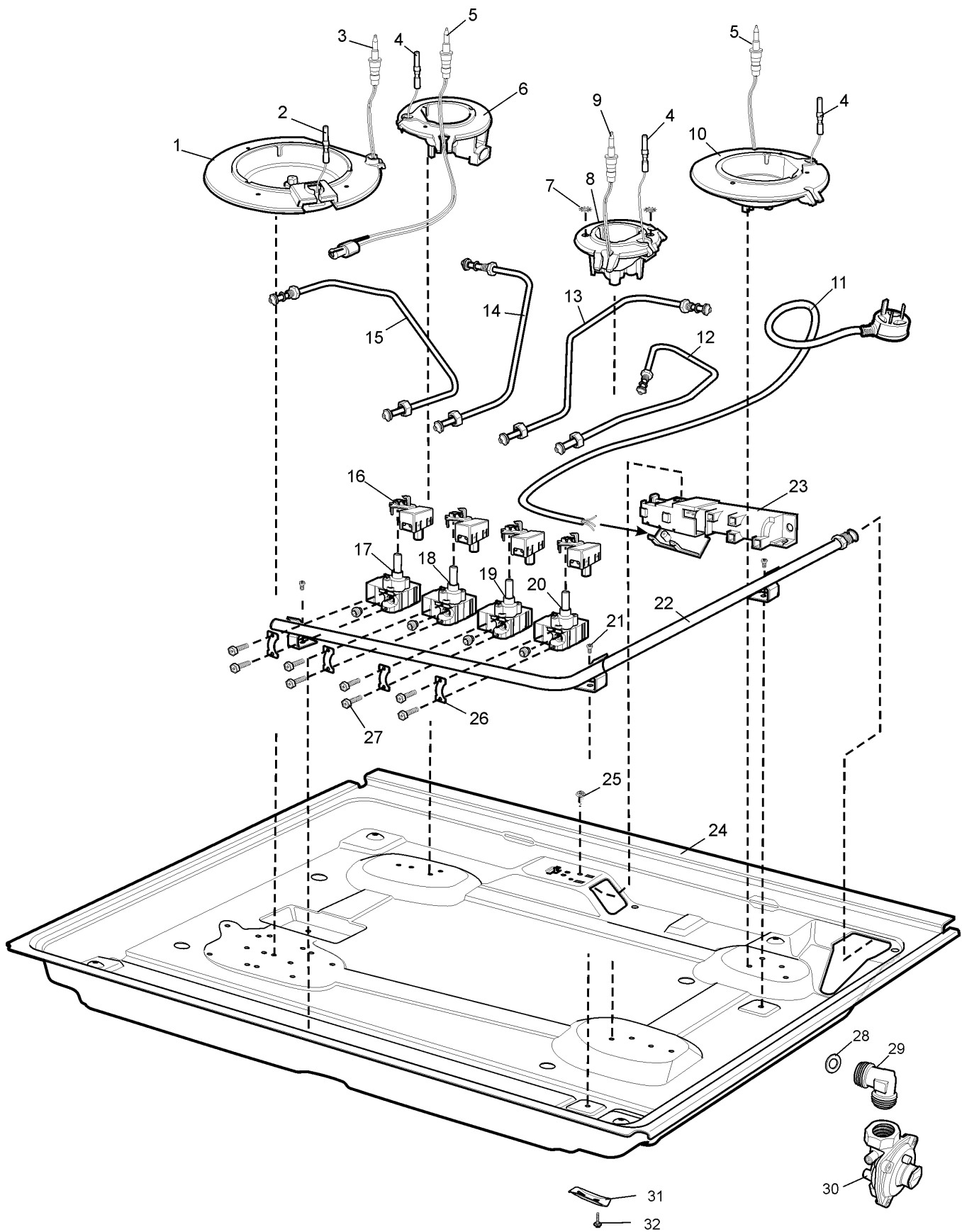
<b>CONTENTS</b>	<b>PAGE Nº</b>
FIRST BUILT DATES	2
CONTENTS	3
HOB ASSEMBLY	4 - 5
BURNER BOX ASSEMBLY	6 - 7
CONVERSION KIT	8 - 9
CIRCUIT DIAGRAM	10

**NOTE: In Parts Listings**

**N.I. = Not Illustrated**  
**N.P.A. = No Part Available**  
**N.P.N. = Not Used on this Model**



ITEM	PART Nº	DESCRIPTION Ex 6651	QTY
1	305 4398 00	TRIVET WOK CROWN CAST	1
2	305 4305 00	TRIVET CAST L/H 60 W/HOUSE (INC ITEM 4)	1
3	305 4306 00	TRIVET CAST R/H 60 W/HOUSE (INC ITEM 4)	1
4	305438800	TRIVET FOOT (PT OF ITEM 2 & 3)	8
5	305 4316 00	BURNER CAP MATT INNER WOK	1
6	305 4317 00	BURNER CAP MATT OUTER WOK	1
7	357 7259 05	TRIPLE CROWN WOK BNR CYL MACH	1
8	305 3818 00	BURNER CROWN/CAP S/R MATT CYL	1
9	305 3819 00	BURNER CROWN/CAP RAP MATT CYL	1
10	305 3817 00	BURNER CROWN/CAP AUX MATT CYL	1
11	305 5524 02	KNOB S/S WESTINGHOUSE GAS CT (INC ITEM 12)	4
12	N.P.A.	CLIP KNOB SPRING (PT OF ITEM 11)	4
13	354 3202 01	SCREW 2.9 X 13 PAN T10 ZP PTFE	8
14	355 6112 01	GROMMET HOB - NFR	4
15	305 4376 00	HOB S/STEEL W/H 60 SCREEN FSG	1
16	356 5189 07	SEAL MASTIC - 550MM (4 X PER PACK)	1
N.I.	305 4502 00	CLIP ARROW IGNITE BLACK	2



ITEM	PART N°	DESCRIPTION Ex 6609	QTY
1	<b>0004 008 445</b>	BURNER BODY ASSY WOK IGN NG	1
2	<b>357 0406 08</b>	PLUG SPARK WOK 500MM ENAMELLED	1
3	<b>357 0564 02</b>	T'COUPLE TT ELUX BRNR WOK 500	1
4	<b>357 0448 17</b>	PLUG SPARK 400 MM ENAMELLED	3
5	<b>357 0563 02</b>	T'COUPLE TT ELUX BURNER 500	2
6	<b>357 7298 48</b>	BURNER BODY ASSY S/RAP IGN NG	1
7	<b>*354 3212 09</b>	WASHER S/P EXTERNAL 4.3 X 8 ZP	2
8	<b>305 4501 00</b>	BURNER BODY ASSY AUX IGN NG	1
9	<b>357 0563 01</b>	T'COUPLE TT ELUX BURNER 275	1
10	<b>357 7298 42</b>	BURNER BODY ASSY RAPID IGN NG	1
11	<b>305 4292 00</b>	CABLE - ELECT SUPPLY IGNITE	1
12	<b>305 4296 00</b>	TUBE BURNER 60 IGNITE FSG RF	1
13	<b>305 4295 00</b>	TUBE BURNER 60 IGNITE FSG RR	1
14	<b>305 4294 00</b>	TUBE BURNER 60 IGNITE FSG LR	1
15	<b>305 4293 00</b>	TUBE BURNER 60 IGNITE FSG LF	1
16	<b>°305 4426 00</b>	SWITCH HARNESS 4P BSI IGNITE	1
17	<b>305 4486 03</b>	VALVE GAS BSI FSG WOK BLACK	1
18	<b>305 4486 01</b>	VALVE GAS BSI FSG SEMI RAP BL	1
19	<b>305 4486 02</b>	VALVE GAS BSI FSG RAPID RED	1
20	<b>305 4486 00</b>	VALVE GAS BSI FSG AUX GREEN	1
21	<b>354 3242 02</b>	SCREW SPIRAL 4 X 6 PAN T10 ZP	3
22	<b>305 3808 00</b>	RAIL GAS 60/75 IGNITE	1
23	<b>357 2092 01</b>	IGN & TERM BOX 4P - 240V ISPRA	1
24	<b>305 3800 00</b>	BURNER BOX 60 IGNITE	1
25	<b>*354 3201 05</b>	SCREW M4 X 6 HEX T20 ZP	1
26	<b>305 4291 00</b>	CLAMP GAS VALVE BSI FSG	4
27	<b>0750 003 026</b>	SCREW M4 X 16 HEX ZC	8
28	<b>0115 009 011</b>	WASHER SEALING (PT OF ITEM 31)	1
29	<b>305 4580 00</b>	ELBOW GAS INLET 1/2" MALE/MALE	1
30	<b>0294 001 032</b>	REGULATOR GAS NG INTEG TEST PT	1
31	<b>353 0284 01</b>	CLAMP BURNER BOX IGNITE	4
32	<b>46667</b>	SCREW #8 X 3/4" PAN Z/P (PT OF ITEM 31)	4
N.I.	<b>305 4425 00</b>	KIT ASSY CLAMPS & INLET 60/75 (INC ITEMS 28, 29, 31 & 32)	1
N.I.	<b>0125 008 356</b>	CLIP SPARK PLUG ELU/X	4

**NOTE \* ITEMS 7 & 25 MUST BE FITTED PROVIDES AN EARTH**

**NOTE ° LOCTITE HAS BEEN USED TO ENSURE IGNITION SWITCHES  
REMAIN CORRECTLY SEATED DURING TRANSIT. WHEN RE-FITTING  
SWITCHES LOCTITE IS NOT REQUIRED.**

## Gas Conversion – Important

**NOTE:** THIS KIT MUST BE FITTED BY A LICENSED GAS FITTER.  
A CERTIFICATE OF COMPLIANCE MUST BE SUPPLIED TO BE KEPT BY THE CUSTOMER.

Please follow the procedure below if a conversion to LPG or NG is required.

1. Remove the hotplate burners to access the hotplate injectors.
2. Replace the injectors with the appropriate injectors. (see table below).
3. Unscrew the hex nut from the regulator. The hex nut, brass washer and nylon insert will disengage from the regulator as an assembly.
4. Unclip the nylon insert from the nut assembly by rotating the insert 1/4 turn and pulling it free. (Figure 2)
5. Correctly orientate the insert and clip back into position. (Figure 3)
6. Refit the hex nut assembly to the regulator ensuring that it is fully screwed down.
7. Turn on the gas supply and at each new connection, check for leaks using soapy water.

8. The operation of the regulator can be confirmed by connecting a manometer to the pressure test point located on the side of the regulator body. (Fig 1) With the appliance operating check the outlet pressure. (see table below)

- When all burners of the appliance are operating at maximum,
- When the smallest burner of the appliance is operating at minimum.

9. One by one, turn the knobs to minimum and adjust the bypass screw (accessible when the knob is removed) until a small stable flame results. Turn the knob to maximum and then back to minimum to ensure that the correct minimum flame is maintained.

10. Attach the correct sticker to the cooker, near the gas supply inlet. (Remove or cover the old sticker)

Burner Type	Natural Gas (Nominal test point pressure: 1.00kPa)	LPG (Nominal test point pressure: 2.60kPa)
Small	1.00	0.55
Medium	1.35	0.70
Fish	1.45	0.78
Large	1.60	0.90
Wok	1.75	1.00

Fig 1

Hex nut assembly fully screwed down.

Pressure Test Point.

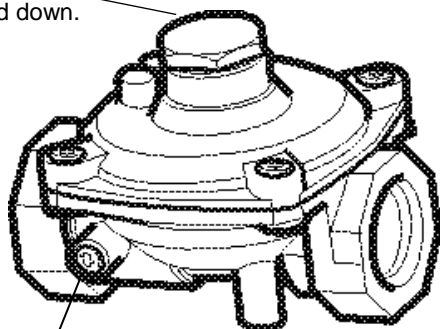


Fig 2

Hex nut assembly removed from regulator and insert disassembled.

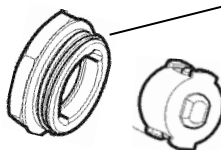
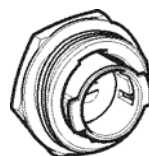


Fig 3

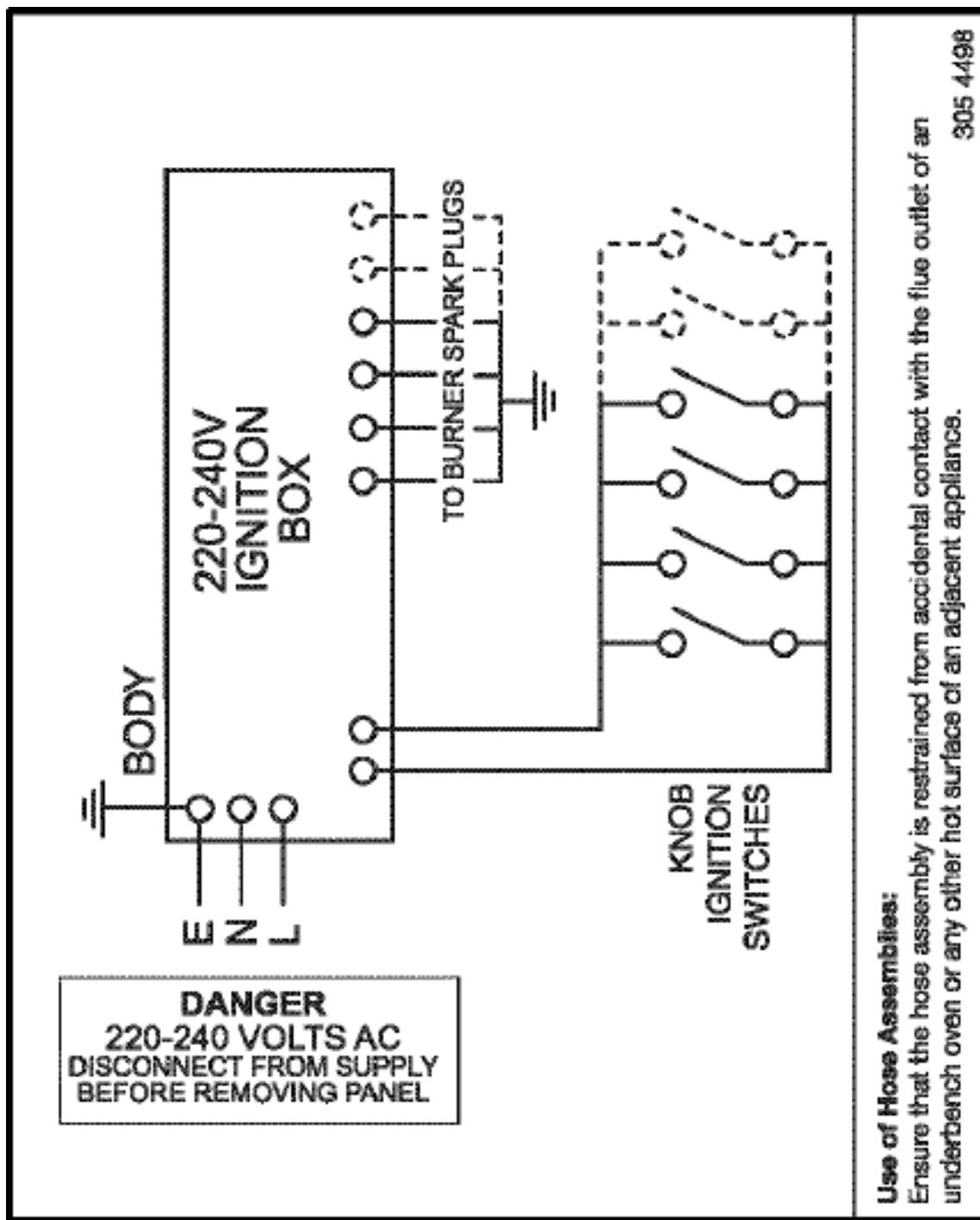
Insert orientated for natural gas operation.

Insert orientated for LPG operation.





<b>Kit Part N° ES6013</b>		
<b>PT N°</b>	<b>DESCRIPTION</b>	<b>QTY</b>
<b>0131 002 100</b>	NIPPLE INJECTOR LP/NG 1.0 MM	1
<b>0131 002 135</b>	NIPPLE INJECTOR SEMI R NG 1.35 MM	2
<b>0131 002 406</b>	NIPPLE INJECTOR FISH NG 1.45 MM	1
<b>0131 002 393</b>	NIPPLE INJECTOR RAPID NG 1.60 MM	2
<b>0131 002 403</b>	NIPPLE INJECTOR WOK NG 1.75 MM	1
<b>0131 001 148</b>	NIPPLE INJECTOR AUX LP 0.55 MM	1
<b>0131 001 149</b>	NIPPLE INJECTOR SEMI R LP 0.70 MM	2
<b>0131 001 186</b>	NIPPLE INJECTOR RAPID LP 0.90 MM	2
<b>0294 001 032</b>	REGULATOR GAS NG INTEG TEST PT	1
<b>0296 004 103</b>	STICKER GAS TYPE LPG	1
<b>0296 004 100</b>	STICKER GAS TYPE NG	1
<b>ES6012</b>	INSTRUCTION SHEET	1

**WARNING**

IT IS ILLEGAL FOR PERSONS OTHER THAN LICENSED ELECTRICAL MECHANICS OR PERSONS AUTHORISED BY LEGISLATION TO WORK ON THE FIXED WIRING OF ANY ELECTRICAL INSTALLATION. PENALTIES FOR CONVICTION ARE SEVERE.

**IMPORTANT SAFETY NOTICE**

This diagram has been prepared for use by electrically qualified service technicians. Electrolux cannot be held responsible for the interpretation of its service publications nor for any injury or damage that may occur in connection with their use.